



Melton
Stone
Supplies

How to install Porcelain Paving



www.meltonstone.co.uk

Tel: 01482 688008

Brief¹

Porcelain paving is new to the UK and currently there are no hard and fast set rules for the installation method.

Firstly, porcelain is a tile and not a paver. It should therefore be installed using the correct method.

Dig out excavation²

Excavate your patio area using either a mechanical digger or shovel. The area should be dug out to a minimum depth of 150mm below your intended finished height of completed patio area.

Please note your finished level must be 2 x course of bricks below the level of the DPM (damp proof membrane)



Sub base installation³

Install 100mm MOT crushed Type 1 sub base hardcore aggregate and compact with a whacker plate.

For best results we recommend doing this in two 50mm sessions and compacting each time.

This area is now ready for the porcelain installation.

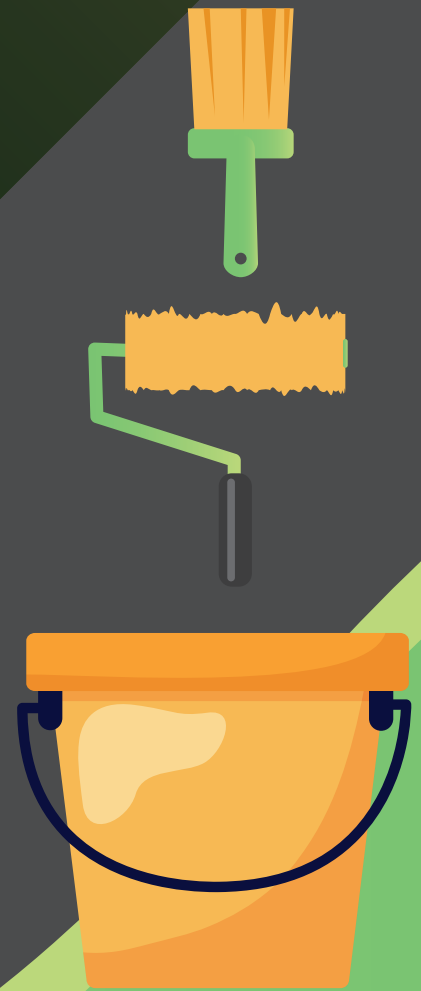


4 Slurry Primer

The slurry primer is to be mixed to a paste simply with water in a bucket to create a slurry consistency.

The primer is then simply coated onto the back of each individual porcelain tile using a roller or brush.

Remember to coat the full back area of the porcelain tile. This stage is now complete.



5 Bedding Mortar

You will need a cement mixer for this part. Mix your bedding mortar in a **simple ratio of 5:1**
5 x level buckets of sharp sand –
1 x level bucket of cement.

This is to be mixed with water in a cement mixer until creating a smooth creamy pliable mix. Please note on hot sunny days you can add more water to make the mix wetter.



6 Installing the porcelain

Shovel out the mortar onto the prepared mot type 1 hardcore sub base area ensuring working to a string line.

A full wet mortar bed is needed when installing porcelain.

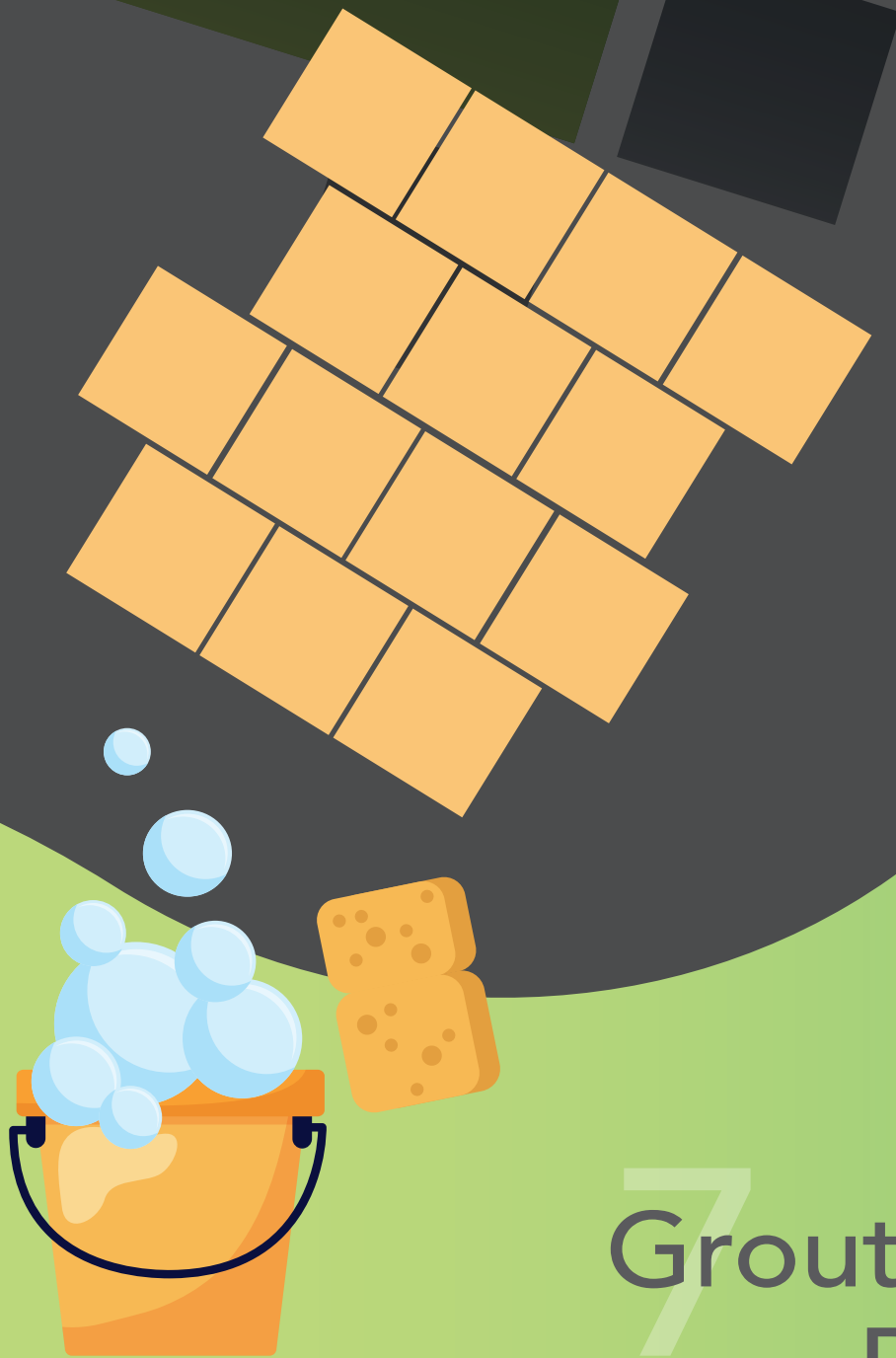
Place your porcelain tile onto the mortar bed and gently tap down using a rubber mallet.

Make sure your slurry primer is wet on the back of the tile – remember ‘wet back onto wet mix’.

Always work to a tight string line to ensure its perfectly level with a subtle incline away from the property or towards a drain channel.

We advise using tile spacers to ensure matching joint widths.

Tile spacers can vary from 4mm – 10mm for porcelain paving best results.



7 Grouting your Porcelain

Firstly ensure your paving and the mortar has thoroughly dried.

We advise slightly dampening the surface to enable the grout to flow better over the surface – Do Not saturate the surface. Mix your porcelain grout to create a smooth, wet mix to ensure its easy to work into the joints.

Using either a sponge grout float or a long handle squeegee simply strike the porcelain grout into all the joints.

Always ensure you wash the area down as you work – especially on hot days.

The grout will take 48 hours to harden and your stunning new porcelain patio is complete.

Need any more help? Contact us today!



Our website:
www.meltonstone.co.uk



Call us on:
01482 688008



Address:

Gibson Lane
Melton
North Ferriby
East Yorkshire
HU14 3HH



email us at:
sales@meltonstone.co.uk



@meltonstonesupplies



Melton
Stone
Supplies